

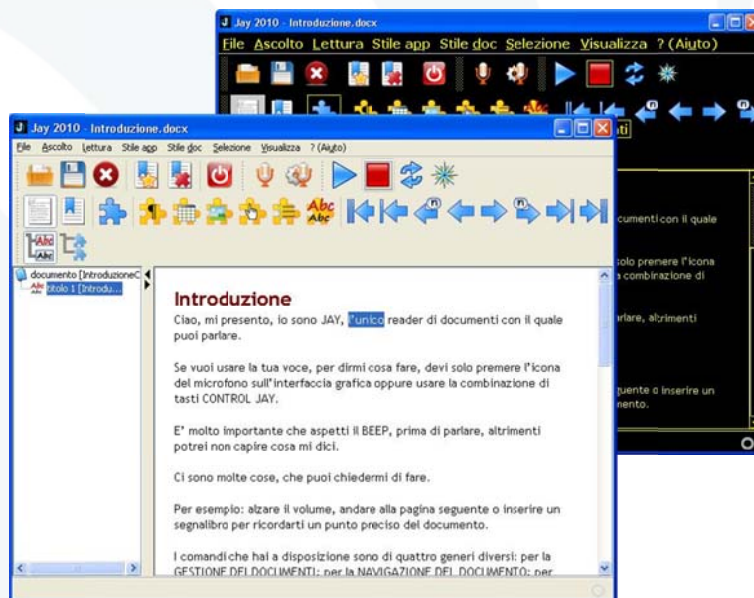


# Jay

## TheActiveReader

### Fact sheet

---





**Jay** is the first document reader that you can control with simple voice commands!

**Jay** is a multimodal application. It means that **Jay** allows the user to select the interface he or she prefers, choosing either the “classical” one (keyboard and mouse) or the newer, easier one, his or her voice.

**Jay** can read documents of the most common types. The user has complete control over the way the document reading. He can stop it and resume it at will. He can explore the document and its structure. He can add and remove bookmarks (which can be saved and/or highlighted). He can control most aspects of **Jay**'s graphical and vocal user interface, such as speech rate and volume, microphone level, application contrast and font size. And all this can be done with simple, easy to learn, voice commands!

**Jay** is simple and easy to learn.

**Jay**'s embedded speech recognition technologies are completely speech independent. This means that no training is required. You just have to download it and enjoy it!

This feature makes **Jay** especially useful for many users that have reading difficulties due to visual impairments, and also for those that just have little or no confidence with computers and applications.

**Jay** stands to prove that vocal technologies can extend accessibility to an even wider range of users.

**Jay** has been developed by DotVocal in partnership with MicroEra.



## Pre-installation requirements

---

To install and use **Jay** your computer must meet the following requirements:

- Recommended processor: Intel® Pentium® 1 GHz or equivalent AMD processor
- WinXP™: RAM 256 Mb (minimum); Windows Vista™ e Windows 7™: RAM 512 Mb (minimum)
- Operating system: MS Windows XP™ (SP3) – 32 bit/64bit; MS Windows Vista™; Windows 7™ or MS Windows 2000™ (SP4)
- Sound card compatible with MS Windows (supporting 16 kHz sampling rate)
- microphone and headphones (or combined headset)
- 200 MB of free disk space (or free USB key space, if using Jay Portable)
- Java Virtual Machine 1.6 recommended. (if absent **Jay** will suggest a site to download if from)
- Internet access to download the installer and to activate the software license

To experience the best speech recognition and reading performance we recommend you use a headset (headphones combined with a microphone) with these features:

- Plug and Play, connected through the sound card (jack: 3,5 mm or USB); or you can use a Bluetooth or wireless connection
- Compatible with MS Windows
- Noise-cancelling capabilities (recommended)

## Supported document types

---

**Jay** is specifically designed to support the following document types:

- MS Word 2007™ (DOCX)
- MS Power Point 2007™ (PPTX)
- PDF
- TXT
- Web Pages (HTML, XHTML)



## Jay Main features

### Documents

---

- **Jay** supports the document formats listed above
- You can access your local documents or remote documents (by URL)
- You can easily reopen any of your last ten recently opened documents
- **Jay** saves your bookmarks and the current position within each opened document, along with other settings. All this will be restored when you reopen the document, even if it has been moved to a different folder or disk
- **Jay** reads document titles (not available for TXT), links (not available for PDF and TXT), and image captions (not available for PDF and TXT)
- **Jay** can recognize single lines and rebuild paragraphs (PDF only)

### Voice commands

---

You can control **Jay** by issuing simple, easy to learn, voice commands. All commands are voice-enabled: (i) navigation and reading (ii) vocal interface configuration (iii) graphical interface configuration.

#### (i) Navigation and reading

You can open and close documents with commands such as: OPEN DOCUMENT, CLOSE DOCUMENT

You can navigate and read the document by issuing very simple voice commands such as: OPEN, READ or STOP.

You can quickly find the document you want to read by accessing the DOCUMENTS, DESKTOP, or MY COMPUTER Windows folders. Or you can apply a file filter in order to view only the types of documents you need, like OFFICE DOCUMENTS.

You can add or remove bookmarks: ADD BOOKMARK, REMOVE BOOKMARK

You can decide how to browse your documents: BY PARAGRAPHS, BY PICTURES, BY PAGES, etc.



**Jay** recognizes both cardinal and ordinal numbers. You can quickly move within the open document with commands like: GO TO THE BEGINNING, GO TO THE NEXT TITLE, GO BACK THREE PAGES, GO TO THE FOURTH IMAGE.

You can always discover the current position by asking: WHERE AM I, or CURRENT POSITION.

### (ii) Vocal Interface configuration

You can control the volume and speed of the reading voice with commands such as: RAISE VOLUME, LOUDER, SOFTER, FASTER, DEFAULT READING SPEED, SET SPEED TO FOUR, etc.

You can reconfigure the microphone volume with MICROPHONE SETUP.

You switch document skimming mode with SKIM DOCUMENT ON or SKIM DOCUMENT OFF. And you can choose the the number of word to use for skimming with SET WORD COUNT TO FIVE, etc.

### (iii) Graphic interface configuration

There are many voice commands to change the way the application and the document looks.

You can change font size: MAXIMUM FONT SIZE, SMALLER FONT, etc.

You can change the application colors and contrast: DEFAULT LOOK AND FEEL, HIGH CONTRAST YELLOW, WHITE ON BLACK, etc.

## Document navigation

---

You can navigate within the open document by:

- Pages
- Paragraphs
- Titles
- Bookmarks
- Images
- Links
- Tables
- Generic elements



## Bookmarks

---

- You can add bookmarks anywhere in the document
- Your bookmarks can be highlighted in the page
- You can navigate the defined bookmarks, moving to the next or previous, or going directly to the nth
- You can remove any bookmark by choosing it from a list of all defined bookmarks
- All your bookmarks will be saved for the next time you will open the same document

## Document reading

---

- You can activate document skimming, and define exactly how many words of each sentence will be read
- **Jay** can also read the document metadata, such as image captions or alternative text, title level, cell position within a table, etc.
- After any issued command, the document reading will start over from the beginning of the sentence
- You can stop and then resume the reading
- **Jay** can highlight the current word while it reads the document
- **Jay** can always tell you the current position within the open document
- Reading volume and speed are tunable.

Visit us at:

[www.jayreader.com/en](http://www.jayreader.com/en)

Contact us at:

[info@jayreader.com](mailto:info@jayreader.com)